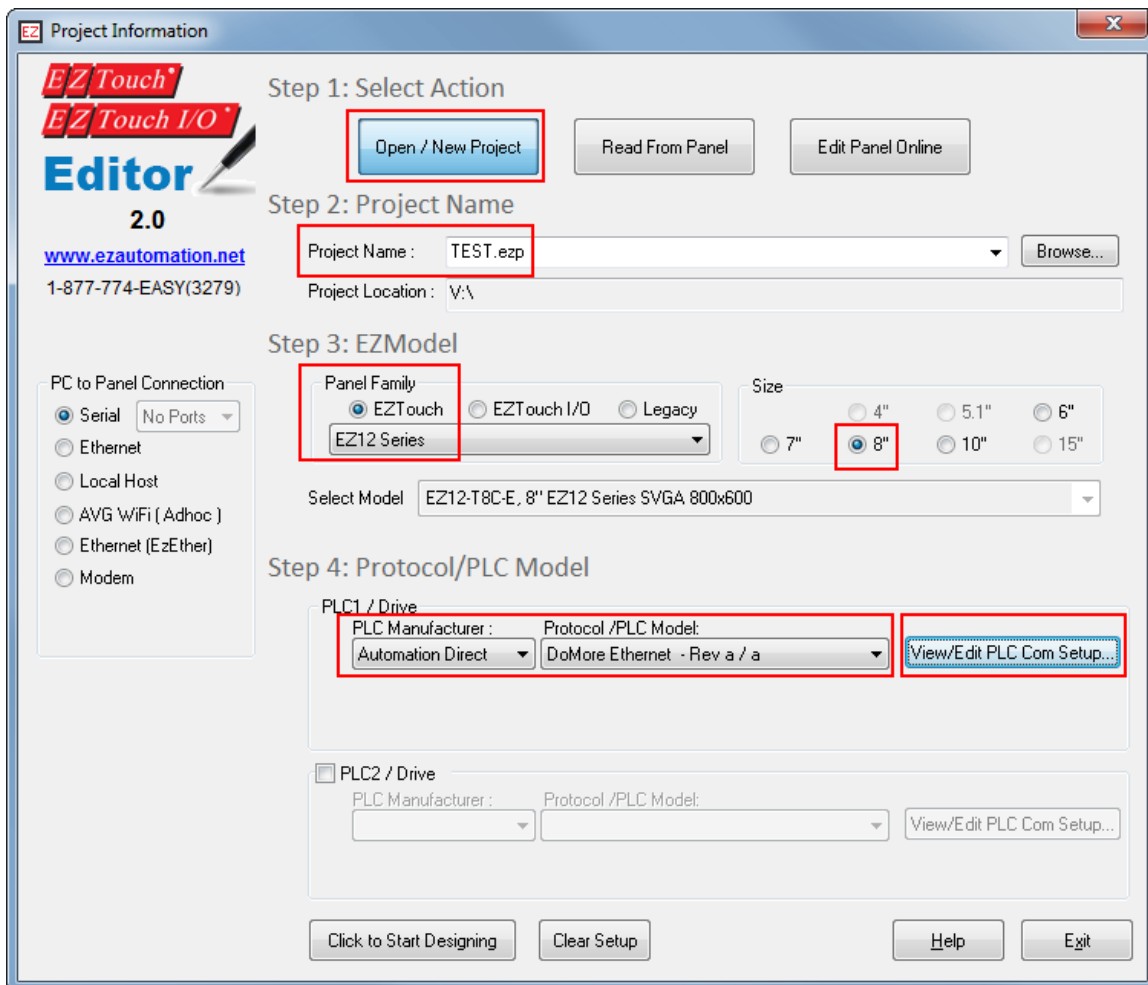
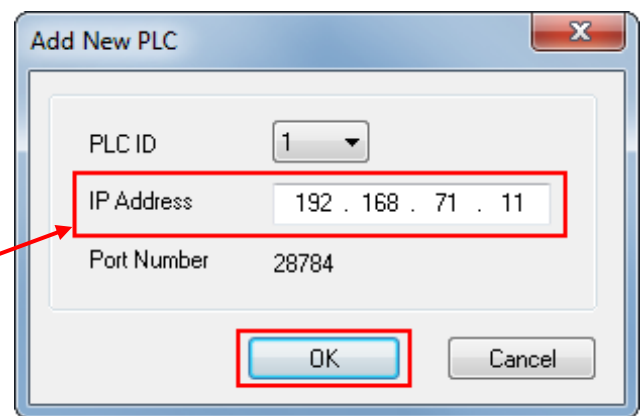
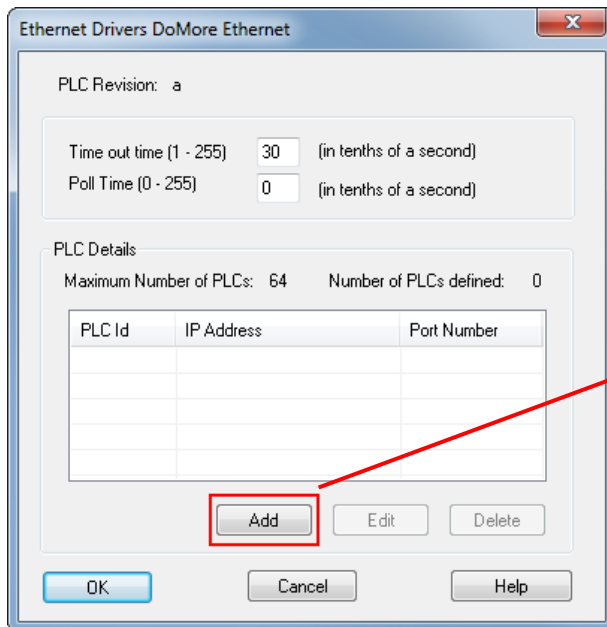


PLCs supported: Directlogic, Do-More, and Productivity series.

1. Launch the EZTouch Editor.
2. Click on "Open / New Project" and type in a project name and click the "Enter" key on your keyboard.
3. Under "Panel Family" select "EZTouch" and click on the drop down menu and select "EZ12 Series".
4. Select the size of the EZTouch panel.
5. Under "PLC1 / Drive" drop down, select "Automation Direct".
6. Depending on the PLC model, please select "ADC Productivity Ethernet" or "DoMore Ethernet" or "Directlogic Ecom"



- Click on “View/Edit PLC Com Setup” and click on “Add” and type in the IP address of the PLC. If you do not remember the IP address, please type in any random numbers, and you can change it later. Click on “OK”



- Click on “OK” on the next window.
- Click on “Click to Start Designing” to start designing your project.

